

GROUND FLOOR PLAN

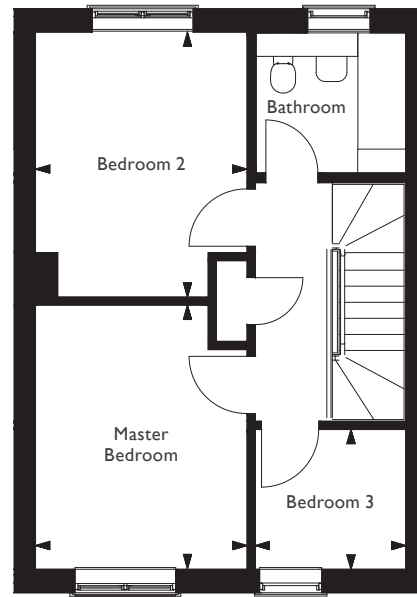
GROUND FLOOR*

Kitchen / Dining

15'1" x 9'5" 4.6m x 2.9m

Living Room

17'1" x 10'2" 5.4m x 3.1m



FIRST FLOOR PLAN

FIRST FLOOR*

Master Bedroom

12'5" x 10'2" 3.8m x 3.1m

Bedroom 2

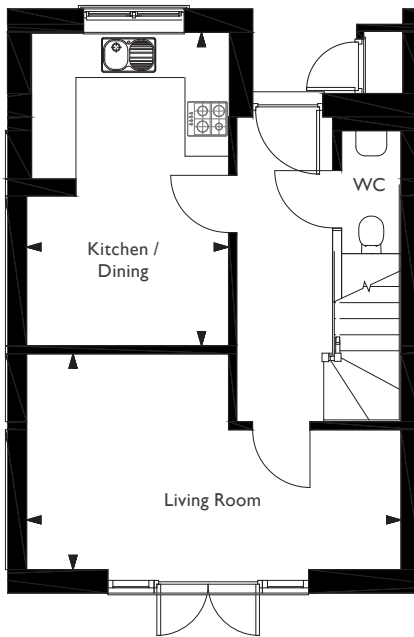
12'8" x 10'2" 3.9m x 3.1m

Bedroom 3

7'2" x 6'6" 2.2m x 2.0m

* Dimensions are approximate and may vary

† Indicates windows on end of terrace properties only



GROUND FLOOR PLAN

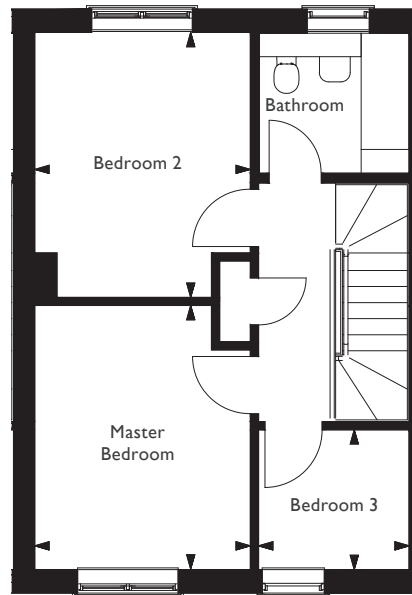
GROUND FLOOR*

Kitchen / Dining

15'1" x 9'5" 4.6m x 2.9m

Living Room

17'1" x 10'2" 5.4m x 3.1m



FIRST FLOOR PLAN

FIRST FLOOR*

Master Bedroom

12'5" x 10'2" 3.8m x 3.1m

Bedroom 2

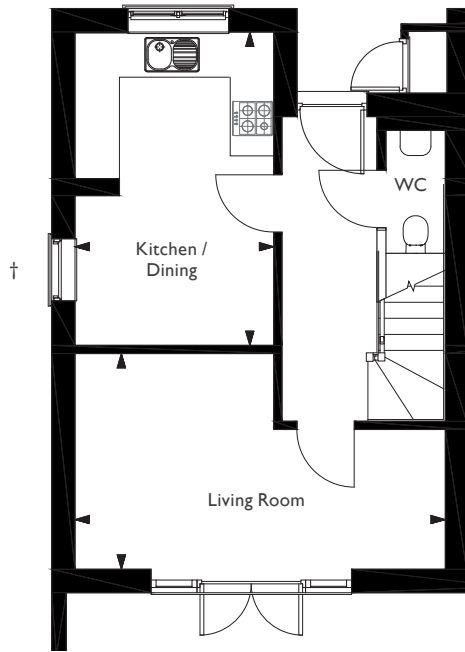
12'8" x 10'2" 3.9m x 3.1m

Bedroom 3

7'2" x 6'6" 2.2m x 2.0m

* Dimensions are approximate and may vary

† Indicates windows on end of terrace properties only



GROUND FLOOR PLAN

GROUND FLOOR*

Kitchen / Dining

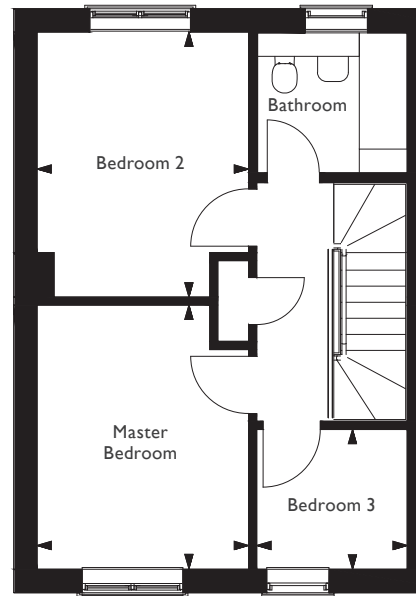
15'1" x 9'5" 4.6m x 2.9m

Living Room

17'1" x 10'2" 5.4m x 3.1m

* Dimensions are approximate and may vary

† Indicates windows on end of terrace properties only



FIRST FLOOR PLAN

FIRST FLOOR*

Master Bedroom

12'5" x 10'2" 3.8m x 3.1m

Bedroom 2

12'8" x 10'2" 3.9m x 3.1m

Bedroom 3

7'2" x 6'6" 2.2m x 2.0m